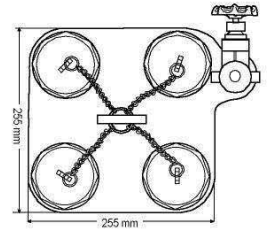
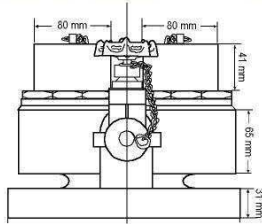


Wet and Dry Riser Equipment

Breeching Inlet, Cabinet & Nozzles



Certified By IKRAM

2-WAY BREECHING INLET

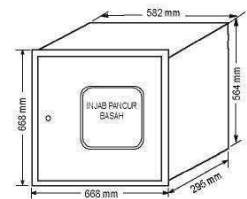
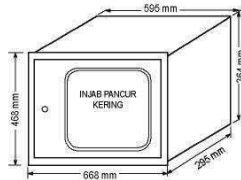
ORDERING CODE	B12
Overall Width	279 mm
Overall Height	215 mm
Overall Weight	17 kg
Nominal Diameter	DN 100
Paint Finish	Epoxy Red

GENERAL SPECIFICATION

Body Material	Ductile Iron / Cast Iron
Manufacture To	BS 5041 Part 3 :1975
Working/Test Pressure	16 Bar / 20 Bar
Pressure Rating	PN16
Inlet	Ø65mm Male Inst. Non Return Valve
Outlet	Flanged 100mm / 150mm
Cap	Plastic c/w Chromed Chain

4-WAY BREECHING INLET

ORDERING CODE	B14
Overall Width	285 mm
Overall Height	215 mm
Overall Weight	33 kg
Nominal Diameter	DN 150
Paint Finish	Epoxy Red



2-WAY BREECHING CABINET

ORDERING CODE	BC2
Body Material	1.6mm Mild Steel Sheet
Dimension (L x H x D)	595mm x 364mm x 295mm
Glass	Reinforcement Wire Mesh Glass
Paint Finishing	Epoxy Polyester Red (RAL 3000)
Manufactured To	BS 5401 : Part 5

4-WAY BREECHING CABINET

ORDERING CODE	BC4
Body Material	1.6mm Mild Steel Sheet
Dimension (L x H x D)	582mm x 564mm x 295mm
Glass	Reinforcement Wire Mesh Glass
Paint Finishing	Epoxy Polyester Red (RAL 3000)
Manufactured To	BS 5401 : Part 5



JET NOZZLE COMPLETE WITH BRANCHPIPE

ORDERING CODE	JSN-001-AL
Body Material	Aluminium Alloy to BS 1490
Finishing	Natural
Inlet Size	Male Instantaneous BS 336
Flowrate @ 65 PSI	210 Ltr/min @ 12mm dia. or 510 Ltr/min @ 19mm dia.
Throwrange @ 65 PSI	16 meter @ 12mm dia. or 22 meter @ 19mm dia.



JETISPRAY DIFFUSER NOZZLE (Standard)

ORDERING CODE	JSN-003-AL-S
Body Material	Aluminium Alloy to BS 1490
Finishing	Natural
Inlet Size	Male Instantaneous BS 336
Flowrate @ 65 PSI	500 Ltr/min (Jet) or 590 Ltr/min (Spray)
Throwrange @ 65 PSI	26 meter (Jet) or 15 meter (Spray)



JETISPRAY DIFFUSER NOZZLE COMPLETE WITH BRANCHPIPE

ORDERING CODE	JSN-004-AL-S-BP
Body Material	Aluminium Alloy to BS 1490
Finishing	Natural
Inlet Size	Male Instantaneous BS 336
Flowrate @ 65 PSI	500 Ltr/min (Jet) or 590 Ltr/min (Spray)
Throwrange @ 65 PSI	26 meter (Jet) or 15 meter (Spray)



JETISPRAY NOZZLE COMPLETE WITH CONTROL VALVE

ORDERING CODE	JSN-007-AL-S-CV
Body Material	Aluminium Alloy to BS 1490
Finishing	Natural
Inlet Size	2" BSP Male Instantaneous
Flowrate @ 65 PSI	160 Ltr/min (Jet) or 140 Ltr/min (Spray)
Throwrange @ 65 PSI	14 meter (Jet/Spray)