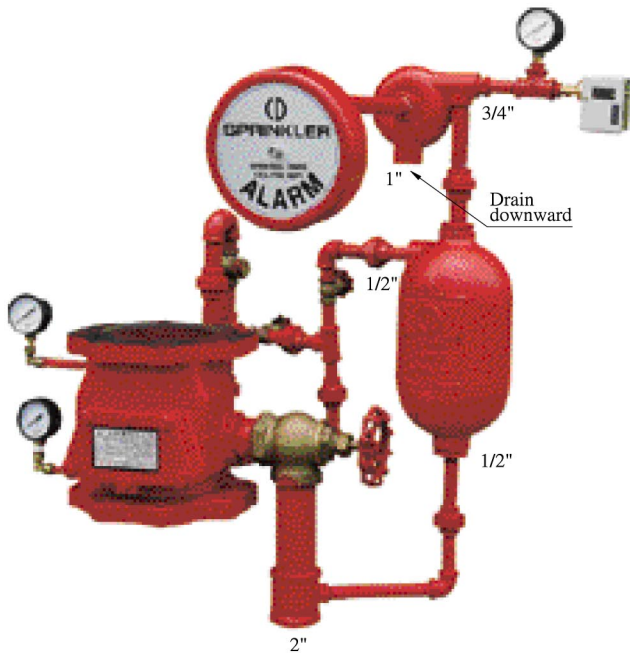


WATERFLOW ALARM VALVE SYSTEM




◆ AVD 911O 4" Model A flanged end vertical installed alarm check valve

◆ AVD 942A 6" Model A flanged end vertical installed alarm check valve

◆ The valve is made in accordance with UL 193 Alarm Valves for fire-protection service.

◆ Material cast iron ASTM A48 class No 35.


◆ Rated pressure 175psi, test pressure 350psi.

◆ Marking UL LISTED 3S58  A 175psi 4 / 6 ALARM CHECK VALVE.

◆ Installation flange dimensions ANSI B16.1 class 125/ANSI B16.5 class 150.

◆ AVD1911N Model A retard chamber, which is made in accordance with UL193.



◆ Material cast iron ASTM A48 class No 35.

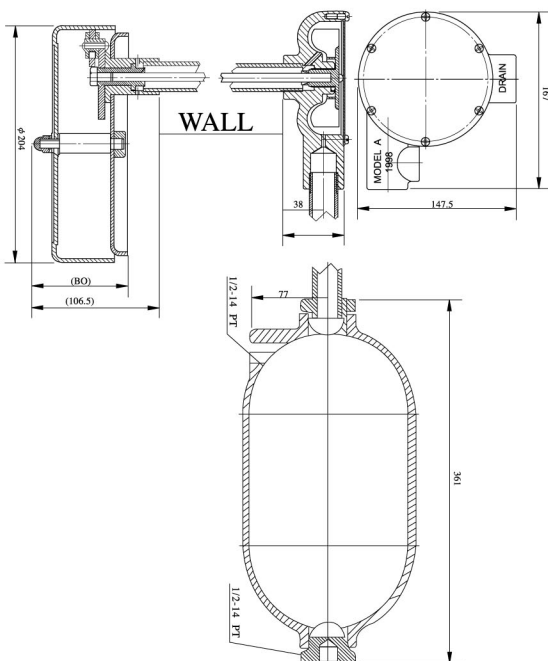
◆ Marking UL LISTED 3S58  RETARD CHAMBER MODEL A.

◆ Installation vertical $\frac{1}{2}$ " NPT (PT) thread female inlet, $\frac{3}{4}$ " NPT (PT) thread female outlet and $\frac{1}{2}$ " NPT (PT) thread female drain.

◆ AVD2911N Model A water motor gong , which is made in accordance with to UL193.

◆ Material water motor aluminum alloy ASTM B26 356.0 , gong shell aluminum alloy ASTM B209 6061.

◆ Marking UL  MODEL A DRAIN on water motor .
SPRINKLER ALARM 
FIRE PROTECTION EQUIPMENT CHANG DER
FIRE PROTECTIONS CORP. WHEN BELL RINGS
CALL FIRE DEPT on gong shell.



* Dimensions , materials and specifications are subject to change without notice.